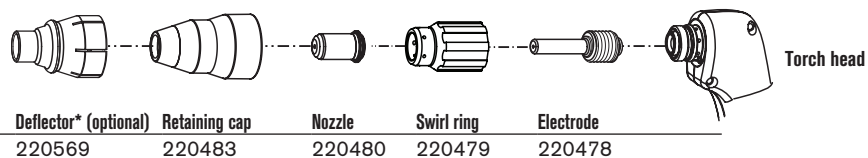


Hypertherm®

powermax30®

T30v hand torch consumables

Standard consumables

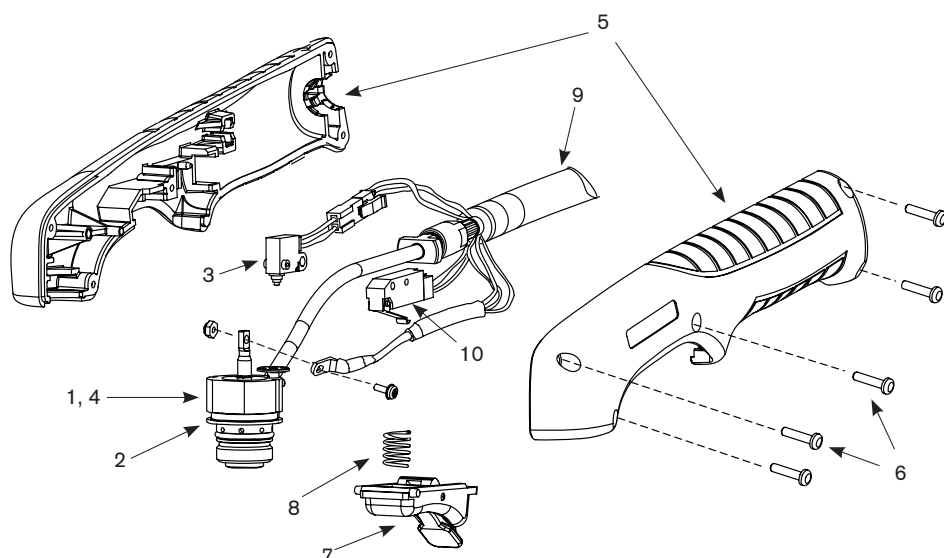


*Optional deflector may be used to help maintain torch-to-work distance or may be used as a guide when cutting with templates.



All-in-one and FineCut kits are available, see pages 25 – 26 or visit: www.hypertherm.com/consumablekits.

T30v hand torch assembly



Assembly

Part number	Description
088001*	T30v hand torch assembly with 4,5 m leads
1. 228112	Kit: T30v main body replacement
2. 058503	O-ring: Viton .626 x .070
3. 228109	Kit: Cap-off sensor replacement
4. 228110	Kit: T30v torch head repair
5. 228111	Kit: T30v torch handle replacement
6. 075339	Handle screws
7. 002244	Safety trigger
8. 027254	Spring
9. 228113	Kit: T30v 4,5 m torch lead replacement
10. 128642	Kit: T30v start switch replacement
123868	Work lead with clamp, 4,5 m

*Assembly includes consumables.

